

## TECHNICAL RIDER «trails»

technical director: Thomas Hinterberger  
Stadtplatz 8, A-4060 Leonding, Austria  
email: kult-ex@posteo.at mobile: ++43-660-1470039

### PERSONEL NEEDED

For set up: 1 stage technician, 2 light engineers, 1 sound engineer, 1 video engineer

During the show: 1 light technician, 1 sound technician,

### PERFORMING AREA / STAGE SIZE

8m wide x 8m deep x 6m high

### TO BE PROVIDED BY THE ORGANIZER

#### CURTAINS, OPERA

- 1 white opera – has to be the size of the stage (8m broad)
- the top of the projection should be covered with a soffit / flies
- 2 black side-drops each side (flat)
- 2 black wings each side

#### FLOOR

Sprung, wooden, smooth, free from splinters.

Must be covered with black dance carpet (including proscenium)

To be provided by the Organizer and laid before the arrival of the

company. Please indicate if your stage floor is raked. If so, how much?

**Cleaning:** The stage must be cleaned after the light set-up and before the show.

#### DARKNESS

The performance needs a really dark theatre (stage, audience), for the performance is run with very low lights. Darkness is essential for the piece. Emergency lights must not shine onto the stage.

#### LIGHT

The dimmers must be DMX 512 controlled - we bring our own light console.

Note: To be confirmed after receiving a complete list of lighting inventory of the theatre, including a rig plan, venue distances and electrical plans showing lighting positions, circuit positions and numbers and permanently hung instruments.

## **VIDEO**

We need a very good video beamer (min. 5000 ANSI Lumen) and minimum Full HD (1920 x 1080).

We created the show with a Panasonic PT-DZ6710 with the lense ET-DLE050 (projection ratio 0.80:1).

It has to be agreed during contract negotiations which beamer the theater/organizer will provide.

If we come by car, we can eventually bring our Panasonic PT-DZ6710 – it is not possible to fly this beamer.

The beamer has to be connected to our Laptop by a HDMI-cable.

## **SOUND**

### **STAGE BOX**

We bring our own laptop (Macbook Pro) and this needs to be connected to the PA - perhaps it needs a DI-Box.

- powerful **P.A.**
- powerful main system L/R front of stage – full range active speakers with subwoofers. Power adapted to the venue. It should be possible to address the subs separately.

### **MONITORS**

- 2 wedges. They will be placed on each corner of the stage.

## **REQUESTED INFORMATION**

- Name, telephone and e-mail of the technical director
- Technical rider of the theatre
- Ground plan of the stage, audience seating
- A cross-section showing stage, audience rake, height of ceiling, FOH electrics and grid
- Electrical plans showing lighting positions, circuit positions and numbers, and permanently hung instruments
- Inventory of sound and lighting instruments

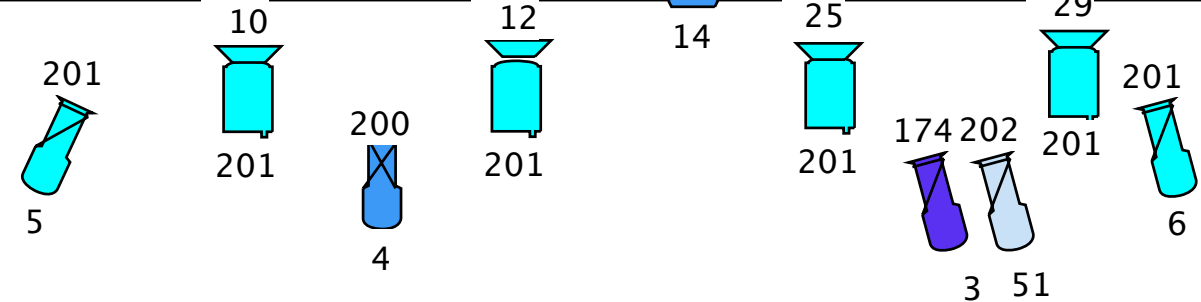
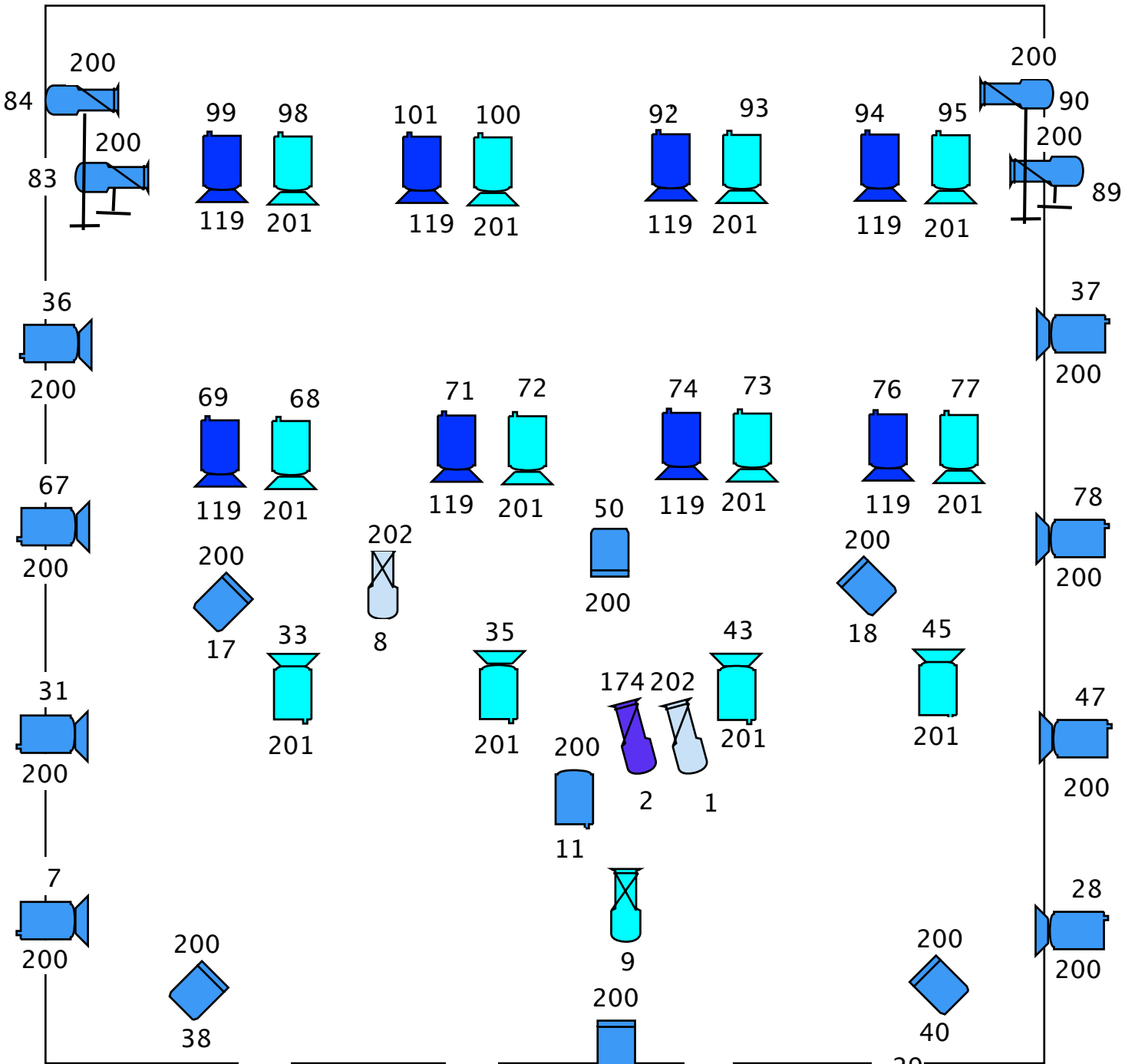
Note: We will need an English or German speaking stage manager, light engineer and sound engineer or fulltime translator next to our lighting person and technical director during the entire working schedule!!!



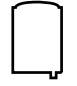
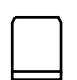
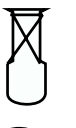

## **CATERING**

Sandwiches und softdrinks (water, coffee, beer) for setting up and show.

# trails - editta braun company

Opera



-  Barndoor
-  Floorstand
-  PC or F
-  Fresnel 2k
-  Profile 30°
-  Profile 50°