

[www.editta-braun.com](http://www.editta-braun.com)

contact technical director Thomas Hinterberger: [kult-ex@posteo.at](mailto:kult-ex@posteo.at) +43 660 147 00 39

contact Editta Braun: [ebcie@editta-braun.com](mailto:ebcie@editta-braun.com) +43 676 639 50 89

contact management: [antje.papke@editta-braun.com](mailto:antje.papke@editta-braun.com) +49 157 33 66 34 54



## **LONG LIFE**

### TECHNICAL RIDER

full-length video: <https://vimeo.com/462818031>

## **IDEAL SCHEDULE**

The day before the performance: set up the whole day, general rehearsal in the evening; day of the performance: technical fine-tuning, rehearsals, performance, strike down.

## **MINIMAL SCHEDULE**

### one day before the performance

18-21 technical set up (hanging lights and stage-set, checking PA; laying white dance floor)

### day of the performance

10-13 focussing lights

13-14 sound-check

15-16 light rehearsal with performer

16-17 warm up performer

17-18 easy run of the whole piece

18-19.30 corrections; break for the performers

20.00 performance

21.15 strike down stage set, packing

21.45 leaving & dinner

## **LIGHT**

The light plot is for big theaters with a stage of 12 x 12 m and can be adapted to your theater – 24 DMX channels should be enough.

To be confirmed after receiving a complete list of lighting inventory of the theatre, including a rig plan, venue distances and electrical plans showing lighting positions, circuit positions and numbers, and permanently hung instruments. All lamps need a R100 or R114 gelatine beside to the color indicated in the plan (except fresnel lamps)

NOTE: We run our show from a laptop, so we need DMX 512.

## **STAGE**

PERFORMING AREA (ideal circumstances, contact us if you have difficulties):

Stage size 10m wide x 10m deep x 6m high.

The audience should be close to the performing area in order to be able to create an intimate atmosphere.

FLOOR: Sprung, wooden, smooth, free from splinters. Must be covered with a white dance floor, to be provided by the organizer and laid before the arrival of the company.

CURTAINS: Black curtains (black box – no wings)

## **SOUND**

### P.A. - POWER AMPLIFIER

Powerful main system L/R front of stage – full range active speakers with subwoofers. Power adapted to the venue. It should be possible to address the subs separately.

### MONITORS

- 2 wedges (12 or 15 inch, min. 60°), with 4 separate amplifiers
- They will be placed on the corner of the stage.

### MIXING DESK

We bring our own small mixing desk, which needs to be connected to the PA - perhaps it needs a DI-Box.

For big venues because of feedback – the Rode Wireless GO II microphones should go via mini jack into the mixing console of the house, should to be processed and then sent to the small mixing desk we brought (aux), from which the master signal is then sent to the house PA.

## **STAGE ACCESSOIRES TO BE PROVIDED BY THE ORGANIZER**

**white dance floor, black back drop, black side drops**, good PA, ready to be plugged with our Mixing Desk; eventually we use your video beamer.

## **STAGE, SOUND ACCESSOIRES brought by editta braun company**

3 MacBook Pro (two on stage, 1 at the technic desk)

1 video beamer

1 Fritzbox

1 Rode Wireless GO II

**At the moment *long life* needs a very good internet connection via a lan cable, that must be provided at the technic desk** - but we are working on a solution, that does not demand internet

**!!! all routers in the performing area must be switched off !!!**

## **TECHNICAL PERSONEL**

We need 1 stage technician, 1 light technician, 1 sound technician.

## **REQUESTED INFORMATIONS**

- Name, telephone and e-mail of the technical director.
- Technical rider of the theatre: plans scale 1/50
- Ground plan of the stage, loading dock, audience seating, technical booth, dressing rooms
- A cross-section showing stage, audience rake, height of ceiling, FOH electrics and grid

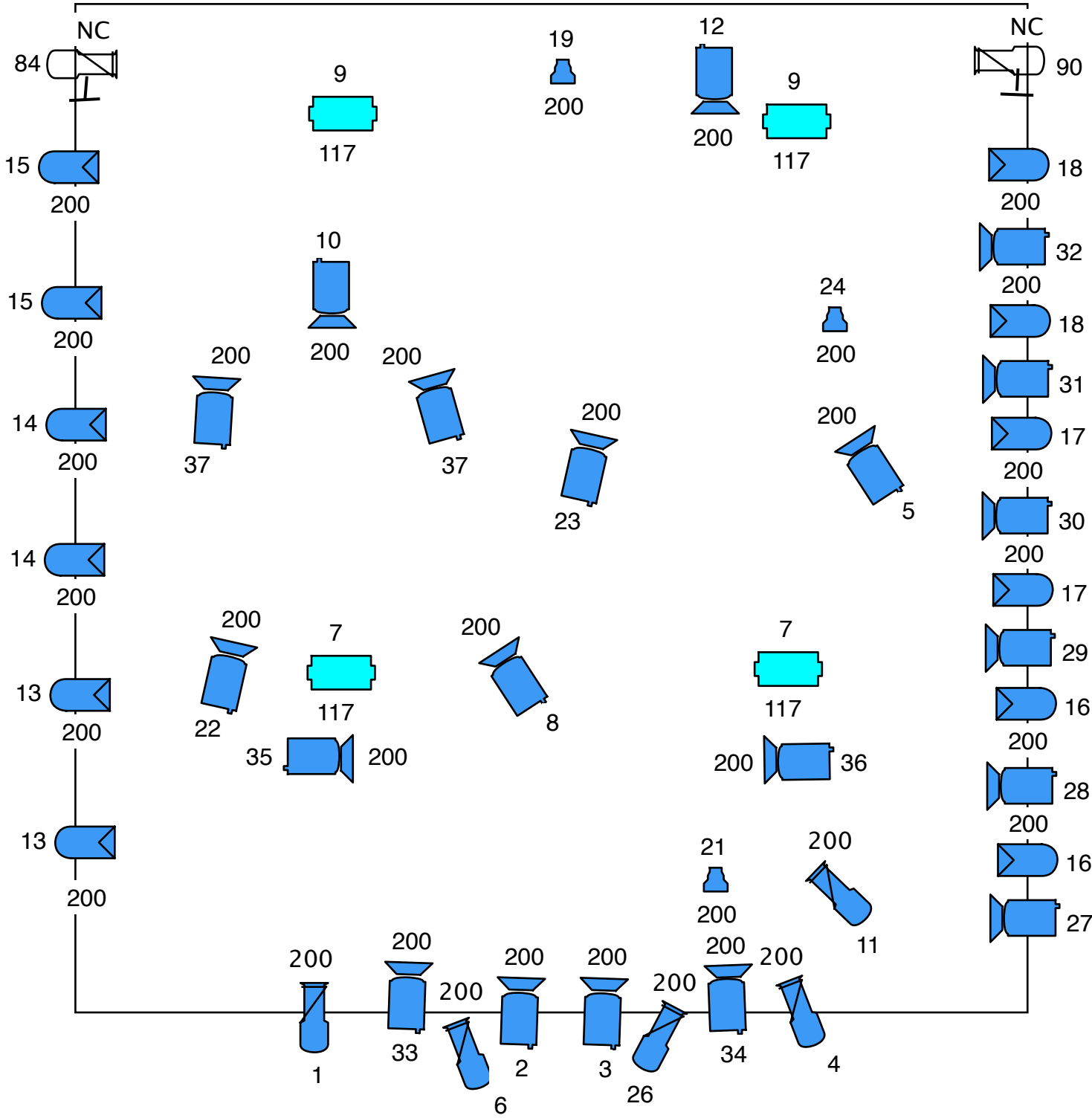
- Electrical plans showing lighting positions, circuit positions and numbers, and permanently hung instruments
- Inventory of sound and lighting instruments

### **CATERING**

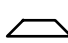



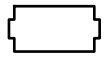
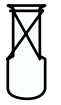


Sandwiches, fruit juice, water, coffee and beer for setting up, show and strike down.

Note: We will need an English or German speaking stage manager, light engineer and sound engineer or fulltime translator next to our technical director during the entire working schedule.

# longlife - editta braun company



40 houselights

- |   |            |   |                  |  |             |
|---|------------|---|------------------|--|-------------|
|  | Barndoor   |  | Pinspot          |  | Par64 CP62  |
|  | Floorstand |  | asymmetric flood |  | Profile 30° |
|   |            |  | PC or F          |  | Profile 50° |