

## currently resident in (derzeit wohnhaft in) TECHNICAL RIDER

### Thomas Hinterberger

Stadtplatz 8, A-4060 Leonding, Austria

email: kult-ex@gmx.at

mobile: ++43-680 20 30 744

full-length video (65 Min.): <https://vimeo.com/82286447>

password: resi2013

### IDEAL SCHEDULE

#### one day before the performance

18-21 technical set up (hanging lights, checking PA), 1. part

#### day of the performance

10-15 technical set up 2. part; focussing lights; build up stage-set;  
sound-check

15-16 light-rehearsal with performer

16-17 warm up performer

17-18 easy run of the whole piece

18-19.30 corrections; break for the performers

20.00 performance

21.15 strike down stage set, packing

21.30 leaving & dinner

But we also can manage to set up within one day.

**IMPORTANT:** We may come without our technician.

In that case we would need for the whole time of set-up, rehearsal and performance a competent, English speaking technician who can deal with light, sound and video!

**STAGE SIZE:** ideal at about 8m wide x 6m deep x 6m high

We perform preferably in close contact to the audience, which may sit in an U-form around the performing area.

Or in a classical theater-situation: the audience sits front, plus some of them on stage on chairs on the right and left side.

**FLOOR:** Sprung, wooden, smooth, free from splinters. Should be covered with black dance floor.

**VIDEO:** We can run video and sound from our lap-top (Mac), we will bring our video-beamer with us.

**LIGHTS:** lights will be quite simple - 36 channels a 2 kW and a mixture of 40 projectors (Par64, Fresnel / PC, Profiles and Floods) are enough.

See also the attached lightplot for details. If you have difficulties please contact us, we can adapt our lightplot to your theater.

To be confirmed after receiving a complete list of lighting inventory of the theatre, including a rig plan, venue distances and electrical plans showing lighting positions, circuit positions and numbers, and permanently hung instruments.

**NOTE: We run our show from a laptop, so we need DMX512**

### **STAGE ACCESSOIRES TO BE PROVIDED BY THE ORGANIZER**

- cable to connect the videobeamer (front of stage) with the laptop in tech cabin, if the way is longer than 15 m
- 6 beer crates in red colour
- when we come by plane, we eventually would need: 13 cardboardboxes (Kartonschachteln), size: 770cmx575cmx570cm. Could also be: 700x600x600. Please ask us if we come with or without cardboard boxes.

### **SOUND: P.A. - POWER AMPLIFIER**

- Powerful main system L/R front of stage – full range active speakers with subwoofers (Meyer Sound / d&B / L-Acoustics / EAW...). Power adapted to the venue.

**MONITORS:** 2 wedges (12 or 15 inch, min. 60°), with 4 separate amplifiers (Type Meyer UM-100 P, d&B Max 15)

They will be placed on each corner of the stage. Sends on 2 auxiliaries.

**STAGEBOX:** We bring our own mixer for the computer and this needs to be connected to the PA - perhaps it needs a DI-Box

**CATERING:** Sandwiches, softdrinks (fruit juice, water), coffee for setting up and show.

### **REQUESTED INFORMATIONS**

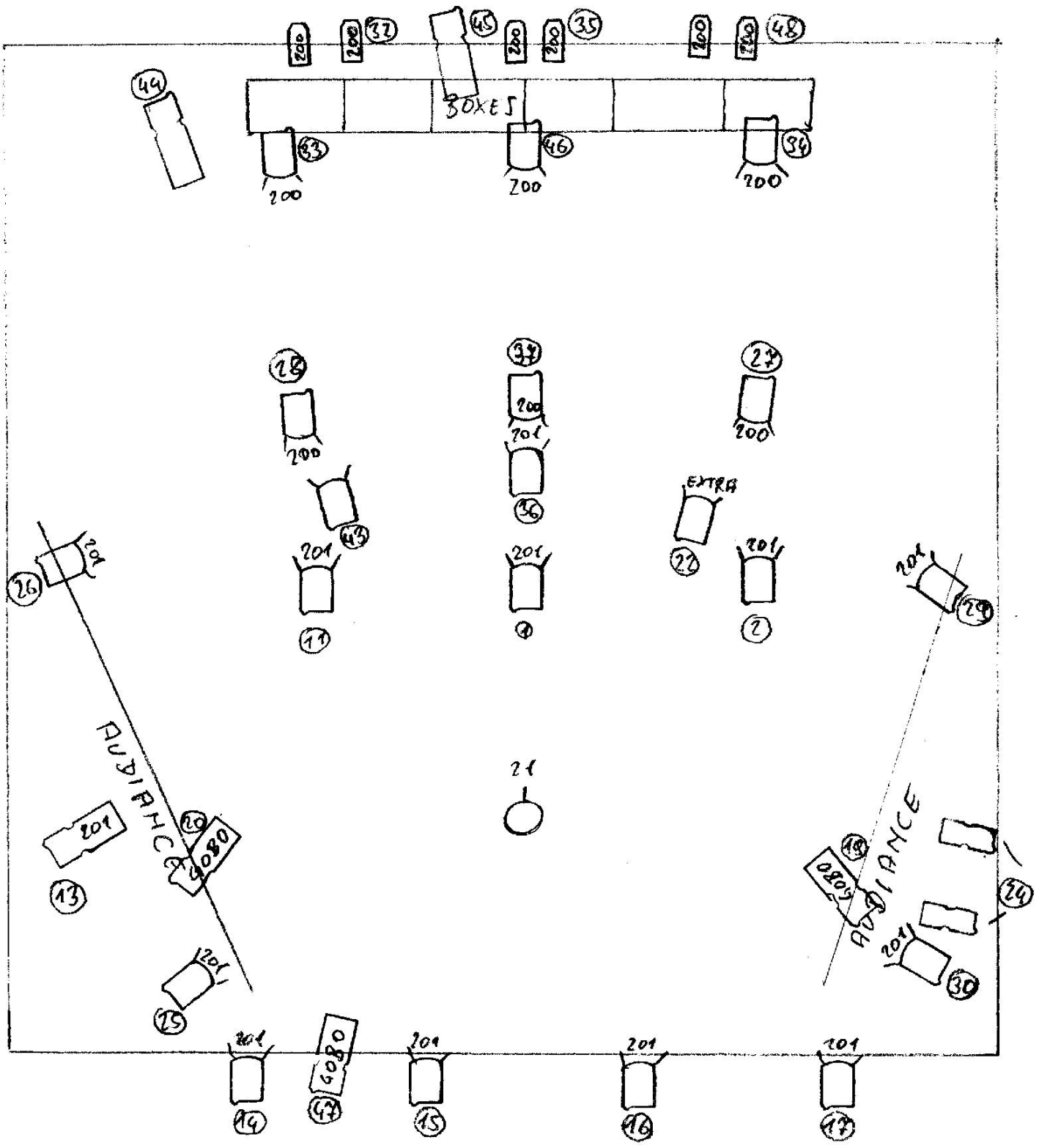
- Name, telephone and e-mail of the technical director (This person has to be present at every moment of the set-up, rehearsals, performances & strike)
- Name of the production manager
- Technical rider of the theatre: plans scale 1/50
- Ground plan of the stage, loading dock, audience seating, technical booth, dressing rooms

**Model for the beer-crate (Bierkiste)**



**Model for cardboard-boxes (Kartonschachtel)**





audience



editta braun company: currently resident in (derzeit wohnhaft in)