

ABSEITS TECHNICAL RIDER

technical director

Thomas Hinterberger

Stadtplatz 8, A-4060 Leonding, Austria

email: kult-ex@gmx.at

mobile: ++43-680 20 30 744

or

Peter Thalhamer

Haberlgasse 30/ Hofwerkstatt, 1160 Vienna, Austria

email: office@gapworks.at

mobile phone: 0043-664-401 49 20

LIGHT

See the attached Lightplot for Details.

To be confirmed after receiving a complete list of lighting inventory of the theatre, including a rig plan, venue distances and electrical plans showing lighting positions, circuit positions and numbers, and permanently hung instruments.

NOTE: We run our show from a laptop, so we need DMX512 onstage because our Technician is part of the performance!

STAGE

PERFORMING AREA (ideal circumstances, contact us if you have difficulties):

STAGE SIZE: 12m wide x 10m deep x 8m high

FLOOR: Sprung, wooden, smooth, free from splinters.

Must be covered with black dance floor.

To be provided by the Organizer and laid before the arrival of the company.

Please indicate if your stage floor is raked. If so, how much?

We perform preferably in an open space with walls around. No curtains, wings, borders or backdrops.

STAGE ACCESSOIRES TO BE PROVIDED BY THE ORGANIZER

4 beer crates

4 wooden chairs (black)

1 small TV set (with Euro_Scart Input) – at about as large as a beer crate

1 small batterie operated radio

1 small table for our lighttechnician (Beeing part of the performance he is seated stage left onstage!)

SOUND

P.A. - POWER AMPLIFIER

- Powerful main system L/R front of stage – full range active speakers with subwoofers (Meyer Sound / d&B / L-Acoustics / EAW...). Power adapted to the venue. It should be possible to address the subs separately.
- On wide stages we need 1 central cluster for front of house.
- In case there is a big balcony or a deep audience room we need a delayed line of extra speakers for the main L/R system.

The exact positions of the speakers depend on the venue and will be decided upon setup.

MONITORS

- 4 wedges (12 or 15 inch, min. 60°), with 4 separate amplifiers (Type Meyer UM-100 P, d&B Max 15)
- They will be placed on each corner of the stage. Sends on 4 auxiliaries.

CD_PLAYERS

- 2 professional CD players with Auto Pause

TECHNICAL PERSONEL

One full day before the performance is necessary for set up.

2 stage technicians, 2 light technicians, 1 sound technician.

CATERING

Sandwiches, softdrinks (fruit juice, water), coffee and tea for setting up and show.

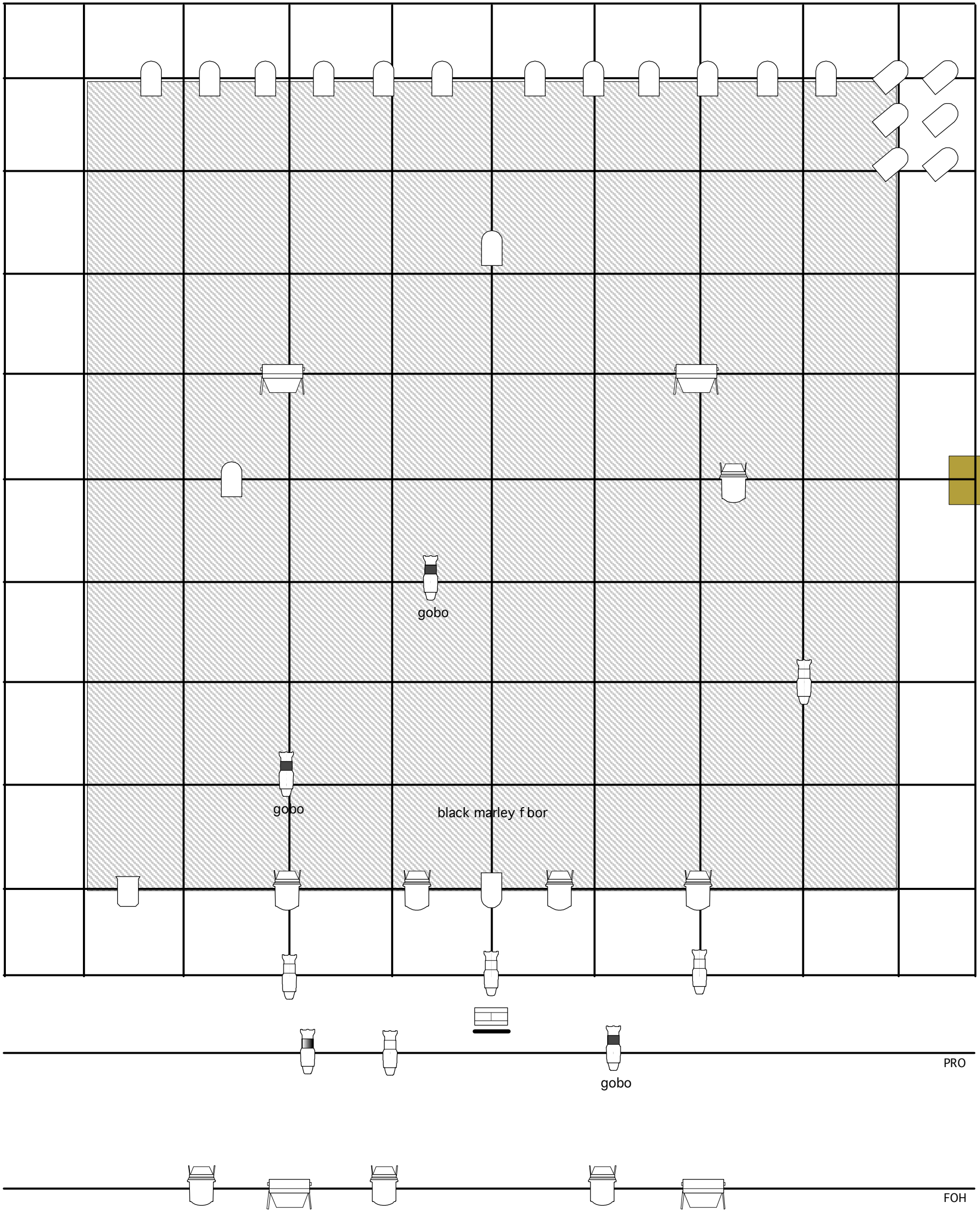
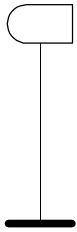
REQUESTED INFORMATIONS

- Name, telephone and e-mail of the technical director (This person has to be present at every moment of the set-up, rehearsals, performances & strike)
- Name of the production manager
- Tel n° of backstage and box office
- Technical rider of the theatre: plans scale 1/50
- Ground plan of the stage, loading dock, audience seating, technical booth, dressing rooms
- A cross-section showing stage, audience rake, height of ceiling, FOH electrics and grid
- Electrical plans showing lighting positions, circuit positions and numbers, and permanently hung instruments
- Inventory of sound and lighting instruments

Note: We will need an English or German speaking stage manager, light engineer and sound engineer or fulltime translator next to our lighting person and technical director during the entire working schedule!!

EDITTA BRAUN COMPANY / ABSEITS

technical director / peter thalhamer / office@gapworks.at / +436644014920
 designed by thomas hinterberger



8 x fresnel 2kw



Par 64 / 6 x cp61
18 x cp62



profile zoom 25°-50°
with gobo holder



symmetrical f bords I 1kw



profile 26°



profile 36°



pc 1kw



strobe

f borstand

small table
for a laptop

Stage: Black marley f bor/ open space/ no backdrop/ no curtains !!

Colors: lee 200 / 201 / 202 / 152

Our show is preprogrammed on a Laptop. We use Standard DMX

NOTE:

THIS DRAWING REPRESENTS VISUAL CONCEPTS & CONSTRUCTION SUGGESTIONS ONLY. THE DESIGNER DOES NOT ASSUME RESPONSIBILITY FOR STRUCTURAL INTEGRITY OR SAFETY OF ANY SCENERY OR LIGHTS USED IN REHEARSAL OR PERFORMANCE.

ALL MATERIALS AND CONSTRUCTION METHODS MUST CONFIRM TO THE STRICTEST APPLICABLE USE GUIDE LINES AND FIRE REGULATIONS.





