

editta braun company

Webereiweg 6, A-5400 Hallein.
Contact: info@editta-braun.com
www.editta-braun.com
mobile ++436766395089.
management@editta-braun.com

Luvos vol.2 TECHNICAL RIDER

technical directors:

Thomas Hinterberger

Stadtplatz 8, A-4060 Leonding, Austria

email: kult-ex@gmx.at

phone: ++43-732-67 29 39, mobile: ++43-680 20 30 744

or

Peter Thalhamer

Haberlgasse 30, 1160 Wien, Austria

email: office@gapworks.at, mobile phone: 0043-664-401 49 20

PERSONEL NEEDED:

For set up: 1 stage technician, 2 light engineers, 1 sound engineer

For set down after the show: 2 stage technicians

During the show: 1 light technician, 1 sound technician, 1 female helper for back-stage

LIGHT:

12 PAR 64 1000 W CP 61 or 62 (depending on the size and grid height of the theatre)

6 PAR 64 / 1kw CP 61 or 62 (depending on the size and grid height of the theatre)

8 PCs 1 Kw on floor stands (with barn doors)

7 PCs 1 Kw (with barn doors)

1 Stroboscope - speed must be adjustable!!!

A minimum of 42 Dimmer channels each with 2kW - all DMX controlled

1 Lightboard with the ability to store cues, part timing and a minimum of 8 submasters. The whole show is run on Go.

Note:

To be confirmed after receiving a complete list of lighting inventory of the theatre, including a rig plan, venue distances and electrical plans showing lighting positions, circuit positions and numbers, and permanently hung instruments.

STAGE

PERFORMING AREA

(ideal circumstances, contact us if you have difficulties):

STAGE SIZE:

10m wide x 10m deep x 8m high

FLOOR:

Sprung, wooden, smooth, free from splinters.

Must be covered with black dance carpet (including proscenium)

To be provided by the Organizer and laid before the arrival of the company. Please indicate if your stage floor is raked. If so, how much?

CLEANING:

The stage must be cleaned after the light set-up (not before the show).

DARKNESS:

Darkness is essential for the piece. Emergency lights must not shine onto the stage.

DESCRIPTION OF THE SET TO BE PROVIDED BY THE ORGANIZER

We need:

- 1 black Backdrop (flat)
- 2 black Sidedrops (flat)
- 1 Hazer
- 1 electric heater (for backstage)

Note: The use of smoke (haze) on stage is essential for the performance and the show cannot be performed in venues where smoke on stage is prohibited!!! So, if necessary, the smoke alarm has to be turned off.

SOUND

P.A.

- powerful main system L/R front of stage – full range active speakers with subwoofers

(Meyer Sound / d&B / L-Acoustics / EAW...). Power adapted to the venue. It should be possible to address the subs separately.

- on wide stages we need 1 central cluster for front of house.
- in case there is a big balcony or a deep audience room we need a delayed line of extra speakers for the main L/R system.

The exact positions of the speakers depend on the venue and will be decided upon setup.

MONITORS

- 4 wedges (12 or 15 inch, min. 60°), with 4 separate amplifiers (Type Meyer UM-100 P, d&B Max 15)

They will be placed on each corner of the stage. Sends on 4 auxiliaries.

CD-PLAYERS

- 2 professional CD players (no DVD-Player!)

REQUESTED INFORMATION

- Name, telephone and e-mail of the technical director (This person has to be present at every moment of the set-up, rehearsals, performances & strike)
- Name of the production manager
- Tel n° of backstage and box office
- Technical rider of the theatre: plans scale 1/50
- Ground plan of the stage, loading dock, audience seating, technical booth, dressing rooms
- A cross-section showing stage, audience rake, height of ceiling, FOH electrics and grid
- Electrical plans showing lighting positions, circuit positions and numbers, and permanently hung instruments
- Inventory of sound and lighting instruments

Note: We will need an English or German speaking stage manager, light engineer and sound engineer or fulltime translator next to our lighting person and technical director during the entire working schedule!!!

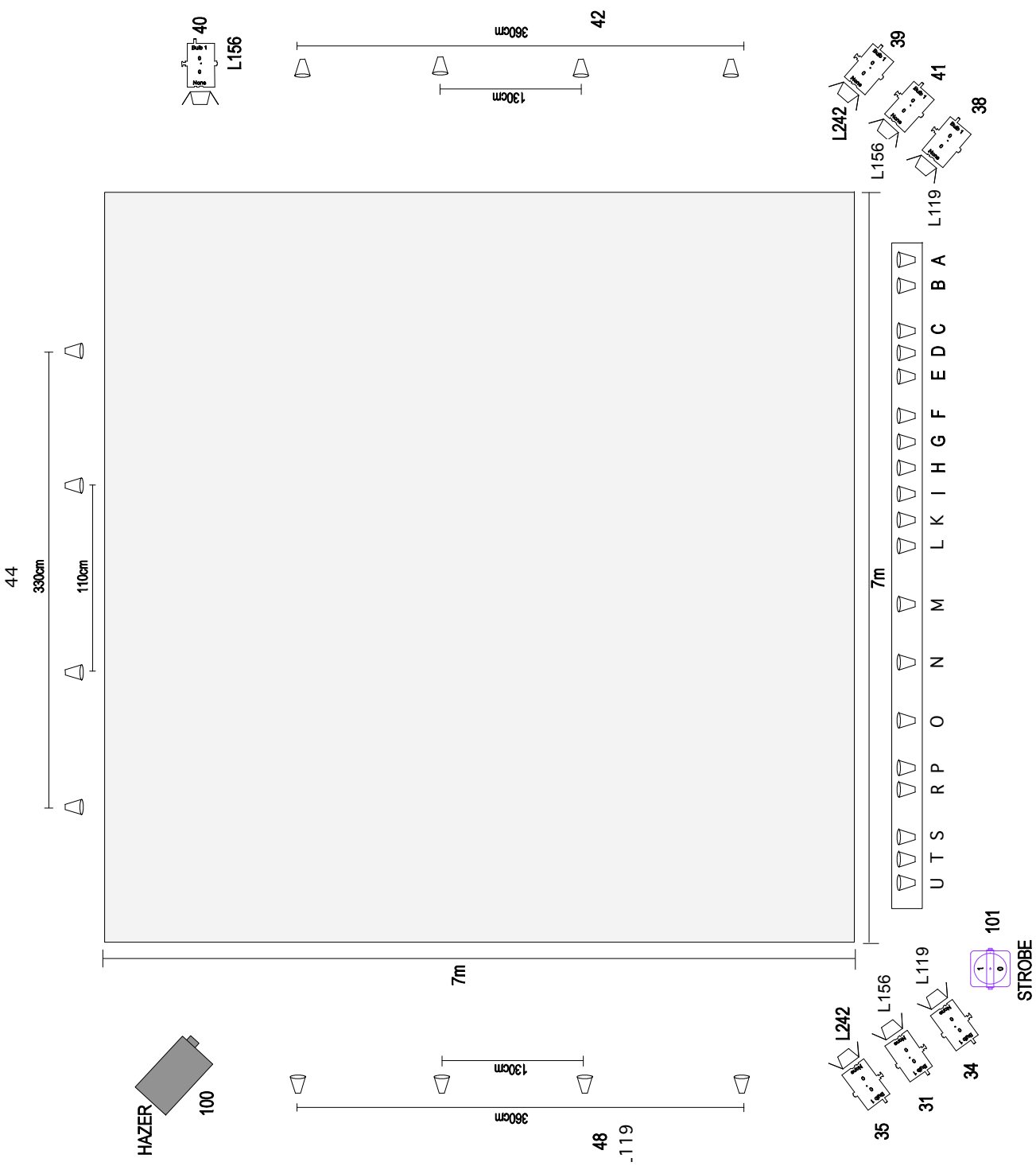
SPECIAL:

- The performance needs a really dark theatre (stage, audience), for the performance is run with very low lights.
- The dancers are already on stage, when the audience comes in - that means that the opening of the doors can be max. 5 min before the show.
- As the dancers are nearly naked, we dont want dont want to have any men in the performing area - this is also for men of the firebrigade or police or whatever
- if they must sit on the stage, they must be female.
- 1 female helper needed to deal with our fog-salt, which is heated on stage. The smog is very fine and stays normally for one hour, when we turn of the ventilation.

CATERING

Sandwiches und softdrinks (fruit juice, water, coffee) for setting up and show.

EDITTA BRAUN COMPANY / LUVOS
floor lighting



Channel: 5 - E
7 - C/I + O/S
10 - H
12 - B/G + D/K + L/N
22 - A/F + U/M + P/R
33 - T

Flower
Mushroom
Center Breakdown
Urluvos
Landscape
Doppeltier