

On How To Deal With A Human - Technical Rider

Iris Heitzinger for editta braun company

Contacts:

www.editta-braun.com

artistic	Editta Braun: ebcie@editta-braun.com
	Iris Heitzinger: i_heitzinger@gmx.net
organizational	Antje Papke: antje.papke@editta-braun.com
technical	Stefan Ebelsberger: ebelsberger@gmail.com

we bring: 1 chair, 1 guitar amplifier, 2 guitars, 1 loopbox, ropes + magnets for the scenery, lighting controller, gobos

we need...

STAGE: white dancefloor 8m x 8m, grid height: 4,3m

CURTAINS: flat black curtains in the back and on the sides

SOUND: PA-system suitable for the size of the theater.

We need 1 DI for plugging a guitar directly into the pa-system.

The other guitar is plugged into the guitar amplifier, no connection to the pa needed.

LIGHTS: 14x Par64 CP62 (MFL), 4x assymetrical Cyclights 1kw, **3x Fluorescent dimmable**, 4x ETC Source4 50 deg, 2x ETC Source4 36 deg, Audiencelight

For details see attached lightplot.

The lighting system must be controlled by DMX 512.

STAFF REQUIRED: At least 1 technician who is familiar with the sound and light gear for setup, rehearsal show and teardown.

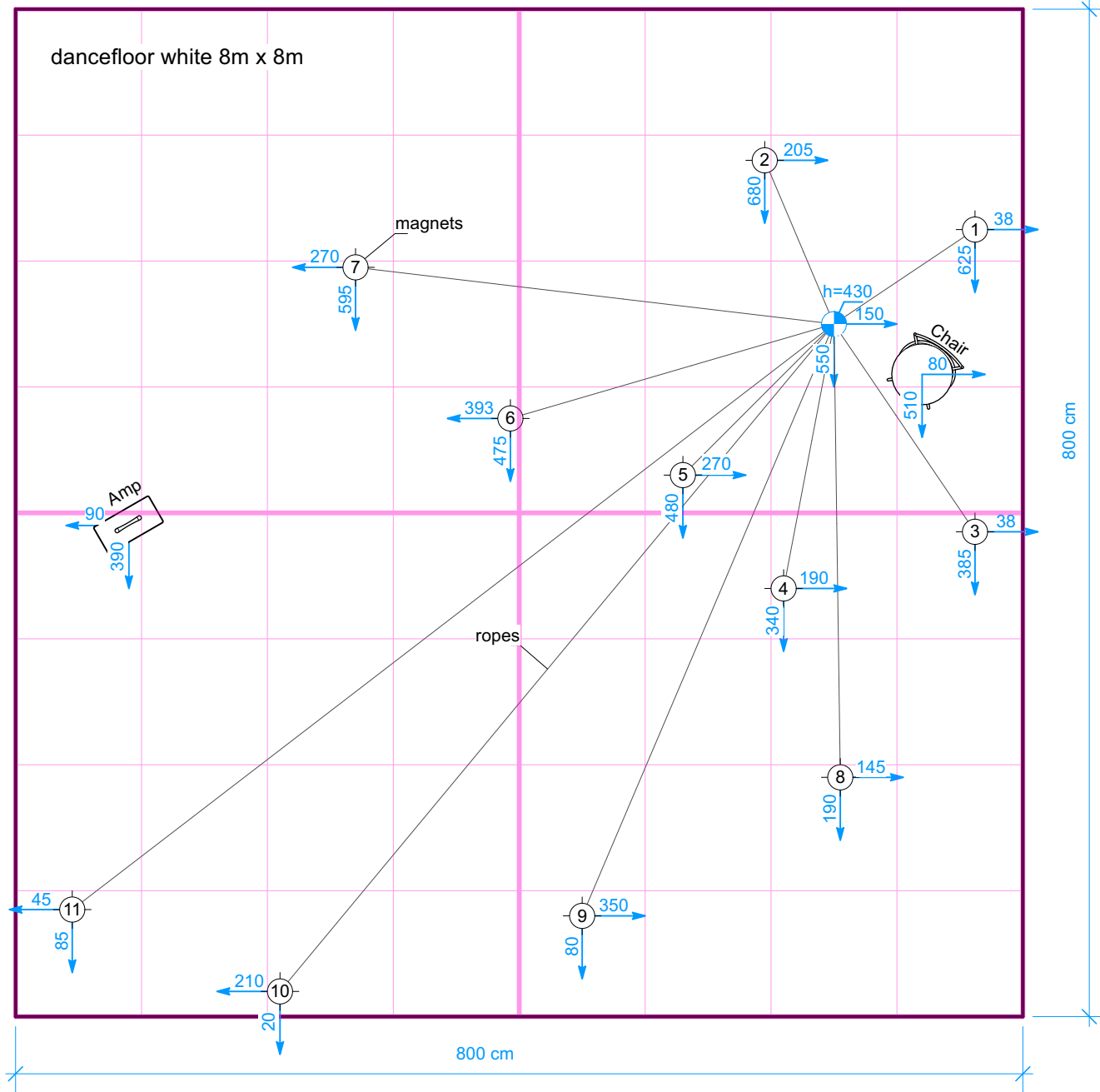
REQUESTED INFORMATIONS

- Name, telephone and e-mail of the technical director
- Name of the production manager
- Tel n° of backstage and box office
- Technical rider of the theatre: plans scale 1/50
- Ground plan of the stage, loading dock, audience seating, technical booth, dressing rooms
- A cross-section showing stage, audience rake, height of ceiling, FOH electrics and grid
- Electrical plans showing lighting positions, circuit positions and numbers and permanently hung instruments
- Inventory of sound and lighting instruments

CATERING

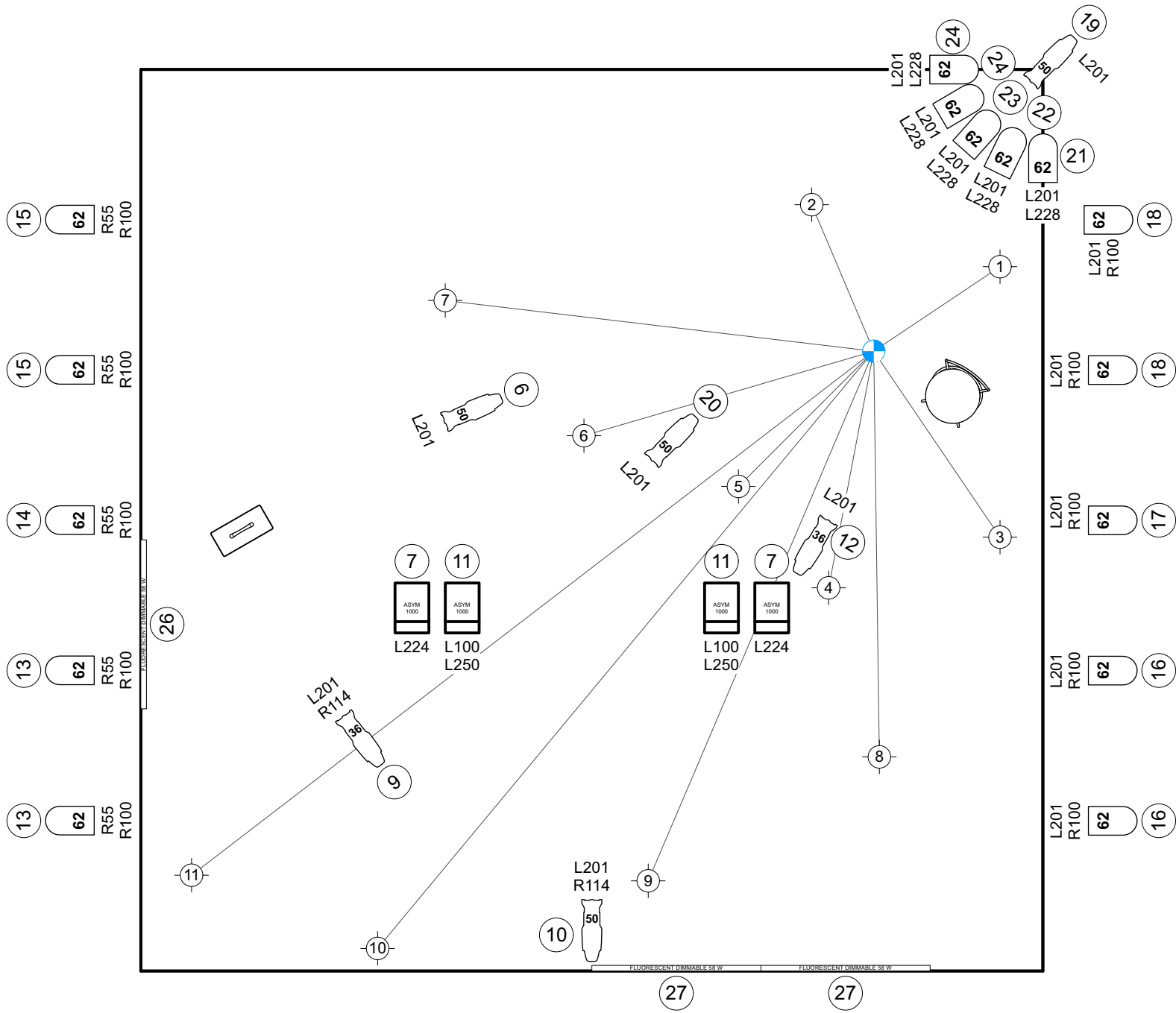
Sandwiches, fruits, softdrinks (water, coffee),...; for setting up and show.

curtains: black masking








HUMAN - ebcie

contact:
Stefan Ebelsberger
cell: +4369911325400
ebelsberger@gmail.com



Light

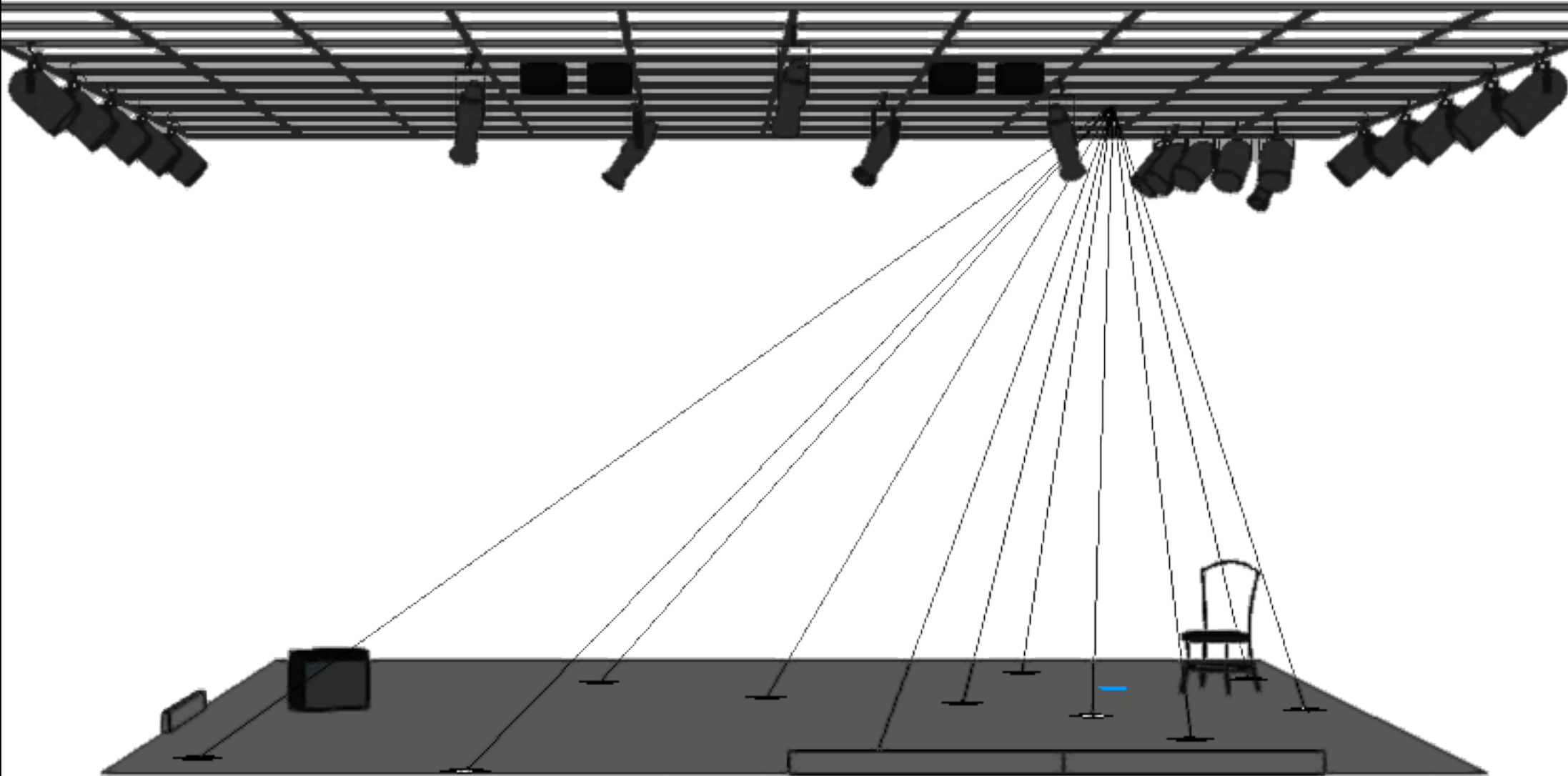
-  Par64 CP62 14
-  Fluter 1kW asym 4
-  ETC Source4 36deg 2
-  ETC Source4 50deg 4
-  Fluorescent Dimmable 58W 3

Color Summary

Color	Size	Count
	L100 L250 295x435	2
	L201 159mm	4
	L201 L228 254mm	5
	L201 R100 254mm	5
	L201 R114 159mm	2
	L224 295x435	2
	R55 R100 254mm	5

HUMAN - ebcie

contact:
 Stefan Ebelsberger
 cell: +4369911325400
 ebelsberger@gmail.com



HUMAN - ebcie

contact:
Stefan Ebelsberger
cell: +4369911325400
ebelsberger@gmail.com